

# The BovLine<sup>®</sup>

From the desk of Angela M. Daniels, DVM  
Circle H Animal Health LLC & CattleLac Services LLC  
angela@circlehanimalhealth.com    www.circlehanimalhealth.com

Volume 8 Issue 1 copyright 2008



## ***Fly Season Is (almost) Here!***

The cooler and drier spring means there aren't many insects yet this year. Nonetheless, since warmer weather has arrived, fly populations will be building up soon.

Circle H can assist you in developing a farm specific fly control program. In addition to teaching you the best ways to control flies on your farm, we offer a custom application program where we apply insecticides and/or fly parasites in the most efficient and effective manner, on a schedule that frees your employees to focus on their routine tasks. Milk production has been shown to decrease proportionately to the number of flies feeding on cattle.

This season, we will be adding a couple of new service options. The first is the ability to utilize fly predators as part of a comprehensive pest management plan. These fly predators can prevent flies from reproducing, reducing overall fly populations.

The second change is the addition of a new residual insecticide to our rotation. This new insecticide is expected to work better on resistant house flies than some of the other fly sprays on the market.

If you are interested in utilizing our fly control services, please contact Scanlon Daniels at (806) 333-2829 to set up a time to discuss your interest and develop a customized plan for your location.

## **Why should I worry about flies?**

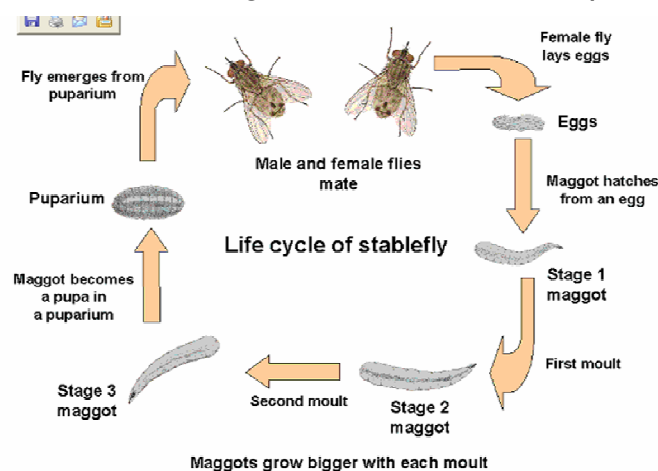
There are two main fly species of concern in dairy cattle facilities – Stable (biting) flies and House Flies. Each has different feeding, resting and reproductive behaviors that can be used in effective insecticide control programs.

**Stable Flies** – Stable flies will bite on any kind of animal with blood. The most commonly feed on the ears and legs of cattle. As few as four flies per animal can cause significant decreases in milk production. When not feeding, they are found in their preferred resting areas. Preferred resting areas are most commonly 4 ft high or lower and will be shady when hot or sunny when cool. Flies will move from sunny to shady resting areas depending on the time of day and the environmental temperature. Since the flies spend time concentrated in these resting areas, effective fly kills can be accomplished by spraying a residual insecticide on these surfaces.

**House flies** – House flies do not feed on animals, but rather on manure and feed. As such, it is not clear their effect on production. They are however, a nuisance to employees and detract from the image of farms. Since house flies tend to be more dispersed throughout the farm, residual insecticide control (as with stable flies) is less effective. Attractant baits are generally effective for house fly control. Since house flies do readily acquire resistance to insecticides, we recommend rotating baits to counter resistance development.

Baits are effective when placed in bait stations near where flies are found. In bait station applications, either can be used in all animal areas. Nonetheless, it may be more beneficial to locate attractant baits away from the animals, in order to draw flies away from the livestock.

**Fly monitoring tools** - There are several ways to monitor fly populations in your facility. One way is to use index cards to count fly specks. Fly specks are the droppings flies leave when they land on surfaces. The number of specks per unit of time can be used to determine if fly counts are increasing, decreasing or staying approximately the same. A second method is to use fly traps. Fly traps offer the advantage of capturing the fly and allowing for identification. The number of flies caught per unit of time can give you an indication of whether fly populations are increasing, decreasing, or staying the same on your farm.



We hope this detailer has assisted you in developing a fly control program for your farm. Let us know if we can assist you in site specific plans and/or our custom application program. Call Scanlon Daniels at (806) 333-2829 to set up an appointment.